

## Technical sheet No 104GM/KAR

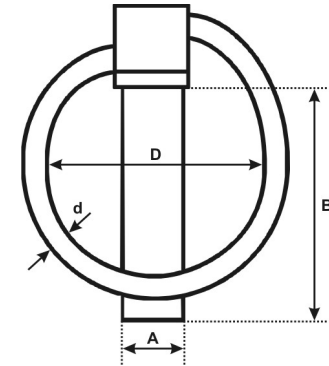
1. Supplier name: „GÓRALMET” M. i J. Góral Sp. J.

Supplier address: ul. Krakowska 68, 32-860 Czchów, tel/fax 014 6635260

2. Product name: **Linch pin with round ring**

3. Description and use: Pin with ring for the secure of hitches and other adjustable elements in agricultural machines. For use within technical parameters given in point 5.

4. Linch pin with round ring cannot be used in the applications other than described in point no 3.



5. Technical parameters:

No	Size A [mm]	Nominal dimensions [mm]									Weight [kg/pc]	Material	Coatings
		B [mm]	D [mm]	d [mm]	---	---	---	---	---	---			
1	2	3	4	5	6	7	8	9	10	11	12	13	14
1	<b>4,5</b>	28	27,5	2,2	---	---	---	---	---	---	0,008	Pin: C20 Ring: spring steel	Electro-galvanized
2	<b>5</b>	40	37,5	2,5	---	---	---	---	---	---	0,013		
3	<b>6</b>	45	41	3	---	---	---	---	---	---	0,021		
4	<b>7</b>	45	41	3	---	---	---	---	---	---	0,028		
5	<b>8</b>	45	45	3,5	---	---	---	---	---	---	0,035		
6	<b>9</b>	45	45	3,5	---	---	---	---	---	---	0,045		
7	<b>10</b>	45	47	3,5	---	---	---	---	---	---	0,052		
8	<b>11</b>	45	47	3,5	---	---	---	---	---	---	0,061		

6. Additional informations:

➤ Additional informations – label: product name; size; quantity; order No; manufacturer's data and website address.