

Technical sheet No 155GM/KAR

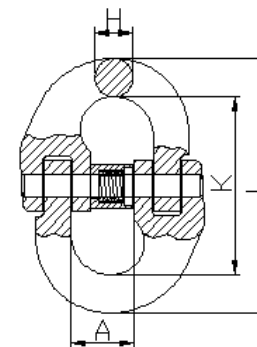
1. Supplier name: **GÓRALMET Sp. z o.o.**

Supplier address: **ul. Krakowska 68, 32-860 Czchów, tel/fax 014 6635260**

2. Product name: **GM-LL10 Connecting link**

3. Description and use: Grade 10 connecting links for slings and lifting purposes. For use within technical parameters given in point 5 and the Directive 2006/42/EC



4. Working load limits are given for the normal working conditions. Usage in extreme conditions is not allowed without supplier agreement. Storage, installation and usage - according to instruction manual for lifting accessories.



5. Technical parameters:

No	Size [mm]	Nominal dimensions [mm]						Weight [kg/pc]	WLL Working load [t]	MPF Proof force [kN]	BF Breaking force [min. kN]	Material	Coatings	Product code No
		A	L	K	H									
1	2	3	4	5	6	7	8	9	10	11	12	13	14	15
1	6	15,5	60	45,5	7,3			0,091	1,4	34,3	54,9	Grade 10 steel: Cr >= 0,40 % Ni >= 0,40 % Mo >= 0,15 % Al >= 0,025 % S <= 0,025 % P <= 0,025 %	Paint	6
2	8	19,5	82	62	10,3			0,188	2,5	61,3	98,1			8
3	10	23	94	68	12,5			0,358	4	98,1	156,9			10
4	13	31	123	91	16			0,713	6,7	164,3	262,8			13

6. Additional informations:

- Safety factor -4
- $MPF = 2,5 \times g \times WLL$, $BF = 4,0 \times g \times WLL$ where g - acceleration of gravity in m/s^2 (i.e. 9,80665)
- Manufacturer and product identification code: LL10
- Traceability code: a four-digit number by formula -YYMM (YY = year of production, MM = month of production)
- Markings: manufacturer's symbol – GMG;  ; manufacturer and product identification code; traceability code; product code No; class No – 10; sizes ≥ 10 additionally TITANOBOA trade mark
- Additional informations – label:  ; trade mark; product name; product code No (size); WLL...T; quantity; order No; manufacturer's data and website address.