

Technical sheet No 55GM/KAR

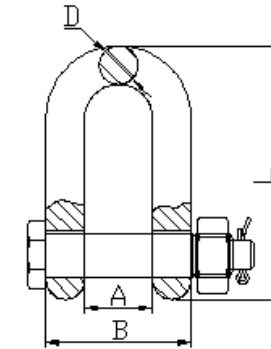
1. Supplier name: **GÓRALMET Sp. z o.o.**

Supplier address: **ul. Krakowska 68, 32-860 Czchów, tel/fax 014 6635260**

2. Product name: **GM049-G8 Dee type chain shackle EN 1677-1**

3. Description and use: Grade 8 dee type chain shackles, for EN 818-4 chain slings and lifting purposes. For use within technical parameters given in point 5 and the Directive 2006/42/EC

4. Working load limits are given for the normal working conditions. Usage in extreme conditions is not allowed without supplier agreement. Storage, installation and usage - according to instruction manual for lifting accessories.



5. Technical parameters:

No	Size [mm]	Nominal dimensions [mm]						Weight [kg/pc]	WLL Working load [t]	MPF Proof force [kN]	BF Breaking force [min. kN]	Material	Coatings	Product code No
		A	B	D	L	Pin [Ø mm]								
1	2	3	4	5	6	7	8	9	10	11	12	13	14	15
1	7/8	15	32	8,5	56	10		0,119	2	49	78,5	Grade 8 steel: Cr >= 0,40 % Ni >= 0,40 % Mo >= 0,15 % Al >= 0,025 % S <= 0,025 % P <= 0,025 %	Paint	7/8
2	10	21	43	10,5	71	11,9		0,227	3,15	77,2	124			10
3	13	25	53	13	90	16		0,437	5,3	130	208			13
4	16	28	61	16,5	111	20,1		0,760	8	196	314			16

6. Additional informations:

- Safety factor -4
- $MPF=2,5 \times g \times WLL$, $BF=4,0 \times g \times WLL$ where g - acceleration of gravity in m/s^2 (i.e. 9,80665)
- Manufacturer and product identification code: GM049
- Traceability code: a four-digit number by formula - YYMM (YY = year of production , MM = month of production)
- Markings: manufacturer's symbol – or GMG; ; manufacturer and product identification code; traceability code; product code No; class No – 8; WLL....T
- Additional informations – label: ; product name; product code No (size); WLL...T; quantity; order No; manufacturer's data and website address.