

Technical sheet No 59GM/KAR

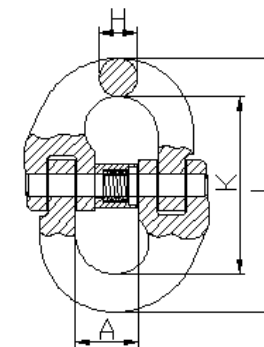
1. Supplier name: **GÓRALMET Sp. z o.o.**

Supplier address: **ul. Krakowska 68, 32-860 Czchów, tel/fax 014 6635260**

2. Product name: **GM074-G8 Connecting link EN 1677-1**

3. Description and use: Grade 8 connecting links for slings and lifting purposes. For use within technical parameters given in point 5 and the Directive 2006/42/EC

4. Working load limits are given for the normal working conditions. Usage in extreme conditions is not allowed without supplier agreement. Storage, installation and usage - according to instruction manual for lifting accessories.



5. Technical parameters:

No	Size [mm]	Nominal dimensions [mm]						Weight [kg/pc]	WLL Working load [t]	MPF Proof force [kN]	BF Breaking force [min. kN]	Material	Coatings	Product code No
		A	L	K	H	Pin [Ø mm]								
1	2	3	4	5	6	7	8	9	10	11	12	13	14	15
1	6	14	60,5	45	7,7	5,1		0,076	1,12	27,5	43,9	Grade 8 steel: Cr >= 0,40 % Ni >= 0,40 % Mo >= 0,15 % Al >= 0,025 % S <= 0,025 % P <= 0,025 %	Paint	6
2	7	21,5	70,5	53,5	8,7	6		0,142	1,5	36,8	58,8			7
3	8	18,5	83,5	62,5	10,6	6,2		0,183	2	49	78,5			8
4	10	23	96,5	71	13	8		0,326	3,15	77,2	124			10
5	13	27,5	124,5	91,5	16,5	10,2		0,690	5,3	130	208			13
6	16	33	143	102	20,5	12,5		1,221	8	196	314			16

6. Additional informations:

- Safety factor -4
- $MPF=2,5 \times g \times WLL$, $BF=4,0 \times g \times WLL$ where g - acceleration of gravity in m/s^2 (i.e. 9,80665)
- Manufacturer and product identification code: GM074
- Traceability code: a four-digit number by formula - YYMM (YY = year of production , MM = month of production)
- Markings: manufacturer's symbol – or GMG; ; manufacturer and product identification code; traceability code; product code No; class No – 8; WLL....T
- Additional informations – label: ; product name; product code No (size); WLL...T; quantity; order No; manufacturer's data and website address