

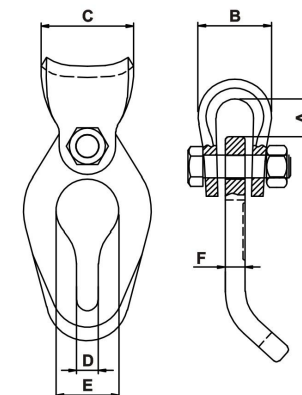
## Technical sheet No 121GM/KAR

1. Supplier name: **GÓRALMET Sp. z o.o.**

Supplier address: **ul. Krakowska 68, 32-860 Czchów, tel/fax 014 6635260**

2. Product name: **ZS10 Grade 10 chain-rope connector**

3. Description and use: Chain-rope connector, is the set of forged elements connected together by M10 hex bolt, designed for skidding, also for use in agriculture, forestry and the other general applications. For use within technical parameters given in point 5.
4. Chain-rope connectors cannot be used in the applications that has safety requirements regulated by law or standards, for example for lifting. Shall be used with grade 10 skidding chains and accessories. Please inspect regularity of nut tightening. Do not overload over LC (kN) given in column 13.



5. Technical parameters:

No	Size [mm]	Nominal dimensions [mm]									Weight [kg/pc]	LC Lashing capacity [kN]	BF Breaking force [min. kN]	Material	Coatings
		A [mm]	B [mm]	C [mm]	D [mm]	E [mm]	F [mm]	---	---	---					
1	2	3	4	5	6	7	8	9	10	11	12	13	14	15	16
1	<b>7/8</b>	22	37	50	10,5	32	11	---	---	---	0,66	60	120	Alloy steel	Paint

6. Additional informations:

- Safety factor -2,
- BF =2,0 x LC
- Manufacturer and product identification code: ZS10
- Traceability code: a four-digit number by formula - YYMM (YY = year of production, MM = month of production)
- Markings: manufacturer's symbol – GMG; manufacturer and product identification code; traceability code; product code No (7/8); class No – 10; LC....kN, trade mark (TITANOBOA)
- Additional informations – label: product name; product code No (size); LC...kN; quantity; order No; manufacturer's data and website address.